

## Contents

[Data Storage and Account Policy](#)

[Acquisition](#)

[Accessing Images](#)

[Windows](#)

[macOS](#)

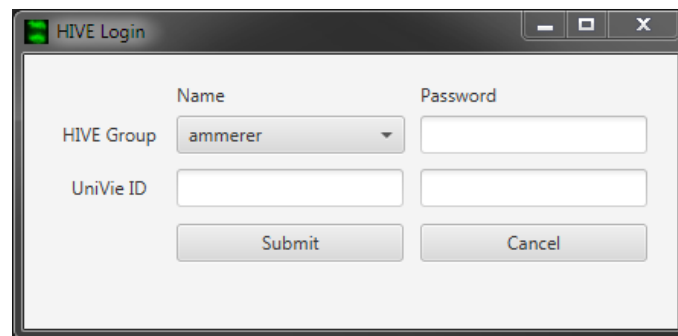
[List of Group Accounts](#)

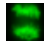
## Data Storage and Account Policy

The server is intended for centralized acquisition (without need to save images on local hard drive). *It is not for long-term storage. Images are automatically deleted after 6 months without notification. It is the responsibility of users to copy images elsewhere prior to expiration.* If the server is running low in hard drive space, files may have to be deleted even earlier. Each Max Perutz Labs group shares one account for all lab members. Ask your group leader for the password.

## Acquisition

At the microscopes, users need the group account password. In addition, the UniVie ID and password is required for authentication (no data are transferred to or from the UniVie network). Upon Windows login, the connection software pops up. Select your group (type the first letter to quickly locate it), enter the remaining credentials and click "Submit".



**Important:** when you are done with your acquisition session, you must log off from the HIVE network. To do so, double-click the HIVE icon  on the desktop and terminate the session.

If the server is down, no login window will appear. In this case, store images locally on the hard drive (usually drive D:). To change the account on a running computer, click the HIVE icon on the desktop. You will be asked if you want to terminate the current session.

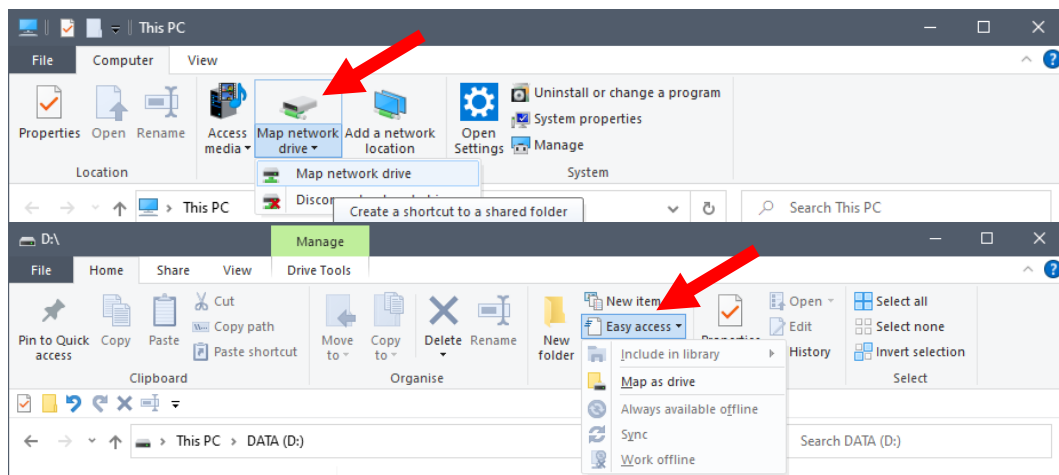
Connection to the VBC share ("*Login*" icon) is possible, but should usually be used only to copy few files such as templates or acquisition settings, not for large data volumes. All microscopes share one connection to the VBC share, so bandwidth (transfer speed) can be limited.

## Accessing Images

Data can be retrieved in read-only mode from all MFPL lab computers. No access is possible from computers with dynamic IP address, i.e. u:connect-wired, eduroam WiFi, and VPN.

## Windows

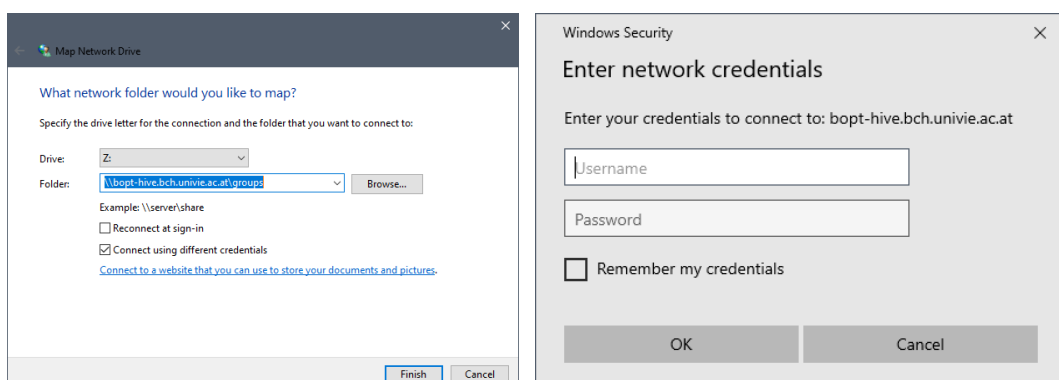
Open an Explorer window. Click on the "*Computer*" tab in the menu bar and select "*Map network drive*". Some Explorers contain this button in the "*Home*" tab under "*Easy access*":



In the dialog popping up, specify a drive letter. In the "*Folder*" field, enter the following address:

**\\bopt-hive.bch.univie.ac.at\groups**

Check "*Connect using different credentials*" and (optionally) "*Reconnect at logon*". Click "*Finish*". In the authorization dialog shown, enter the group account name and group password. If you had selected "*Reconnect at logon*", you may also want to check "*Remember my credentials*".



# HIVE

## Acquisition Server



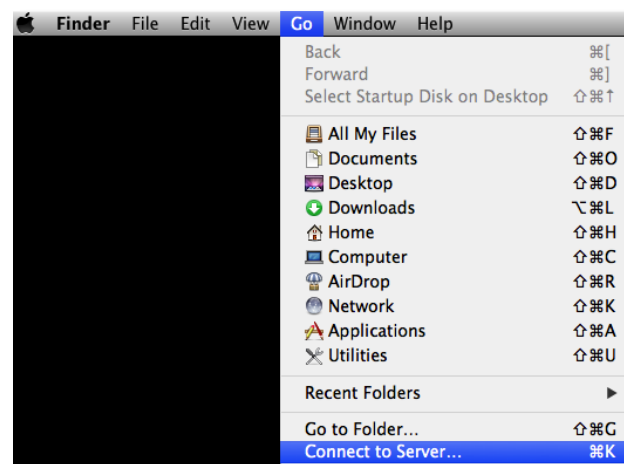
It is possible to directly map the group folder by appending the group account name:

**`\\bopt-hive.bch.univie.ac.at\groups\<group account>`**

To remove the network drive, open an Explorer, right-click on the the drive and select "Disconnect".

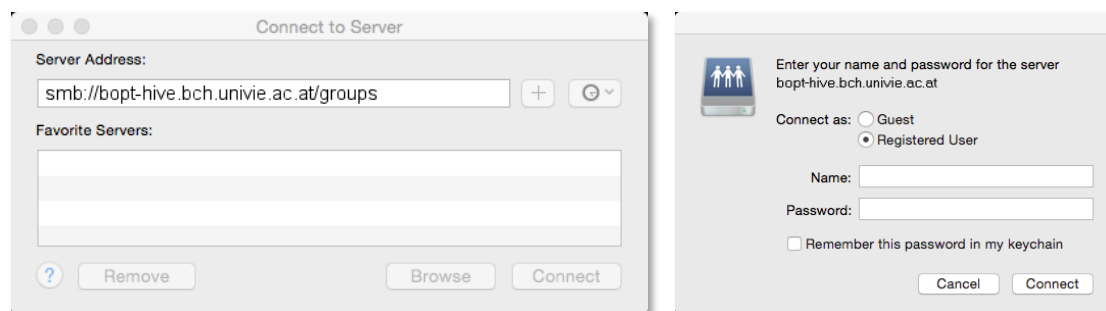
### macOS

Open the Finder, click "Go" and "Connect to Server...".



In the dialog window opening, enter the following server address:

**`smb://bopt-hive.bch.univie.ac.at/groups`**



By clicking the "+" icon, you can permanently save the address as favorite server. Click "Connect". In the authentication dialog popping up, check "Registered User" and (optionally) "Remember this password in my keychain". Enter group name and password, then click "Connect".

To disconnect the network drive, open the Finder and click on the "Eject" icon (in the sidebar after the name of the mounted share).

### List of Group Accounts (Jan. 2023)

Group	Account	Group	Account
Ameres	ameres	Kowalski	kowalski
Ammerer	ammerer	Kuchler	kuchler
Baccarini	baccarini	Leeb	leeb
Bachmair	bachmair	Leonard	leonard
Barta	barta	Loidl	loidl
Blaas	blaas	Martens	martens
Bläsi	blaesi	Martinez	martinez
Bücker	buecker	Moll	moll
Campbell	campbell	Müllner	muellner
Dammermann	dammermann	Nimpf	nimpf
Decker	decker	Ogris	ogris
Djinovic-Carugo	djinovic	Otsuka	otsuka
Dong	dong	Raible	raible
Ellis	ellis	Rotheneder	rotheneder
Foisner	foisner	Schlögelhofer	schloegelhofer
Fuchs	fuchs	Schroeder	schroeder
Görke	goerke	Skern	skern
Hartig	hartig	Slade	slade
Hermisson	hermisson	Tessmar-Raible	tessmar
Hofbauer	hofbauer	Versteeg	versteeg
Ivessa	ivessa	von Haeseler	vonhaeseler
Jantsch-Plunger	jantsch	Weitzer	weitzer
Karagöz	karagoz	Wiche	wiche
Klein	klein	Witte	witte
Köhler	koehler	Yudushkin	yudushkin
Konrat	konrat	Zagrovic	zagrovic
Kovarik	kovarik		